

Evelyn Clark Designs . . .

Swallowtail Lace Shawl

A border of lily of the valley adds an interesting counterpoint to the tiny budding lace pattern at the top of this small shawl. It ends with a scalloped edging, and the lace throughout has an Estonian influence.

This shawl looks great in both solid and semi-solid color lace, fingering, and Shetland/sport/DK weight yarns.

This design originally appeared in the Fall 2006 issue of Interweave Knits.

Advanced Skill Needed

Knitting nupps

Abbreviations

inc increase 1 by knitting in front and back of stitch
k knit
k2tog knit 2 stitches together
p purl
p5tog purl 5 stitches together
RS right side of shawl
sk2p slip 1 stitch knitwise, k2tog, and pass slipped stitch over k2tog
ssk slip 1 stitch knitwise, slip next stitch knitwise, replace on holding needle, and k2tog through back loops
st(s) stitch(es)
St st stockinette stitch
WS wrong side of shawl
yo yarn over
* repeat instructions between asterisks
[] repeat instructions inside brackets specified number of times or to remaining number of stitches



Sample Shawl

50g (437 yds/400m) Misti Alpaca Lace, lace weight yarn (23 wpi), 100% baby alpaca, Color 7120

Circular Needles

24" (61 cm) or longer needles in size to obtain gauge. Suggested sizes shown below.

Yarn Weight	Yarn Amount	Circular Needles	4" (10cm) St st Gauge	Blocked Size
Lace 18+wpi	437 yds (400m)	US 4 (3.5mm)	22 sts	25 x 50" 63.5 x 127cm
Fingering 16–17 wpi	516 yds (471m)	US 6 (4mm)	18 sts	27 x 54" 68.5 x 137cm
Shetland/Sport/DK 13–15 wpi	612yds (559m)	US 8 (5mm)	14 sts	32 x 64" 81 x 162cm

Instructions

Supplies

2 stitch markers; 1 coilless safety pin; tapestry needle to weave in yarn ends; and rustproof pins for blocking

Optional Supplies

1 yd (1m) smooth waste yarn and crochet hook for provisional cast-on; and blocking wires

Shawl Notes

1. Shawl is a triangle made up of 2 triangles separated by the center stitch. It is worked from the top down and increases 4 stitches every other row to the edging.
2. It is helpful to place markers before the center stitch and the last 2 border stitches, as well as to hang a safety pin at the edge to mark beginning of odd numbered rows.
3. Nupps are made by loosely working k1, yo, k1, yo, k1 into a stitch to increase 5 stitches; on the next row, purl those 5 stitches together. It is important to work the nupp loosely.
4. Lace can be worked from written instructions or charts.
5. Wraps-per-inch (wpi) is a way to measure yarn size. Without stretching, wrap yarn around a ruler for 1" (2.5cm), and count the strands.

INSTRUCTIONS—Cast-on

Shawl can be started with the Garter Stitch Tab or any ordinary cast-on.

Garter Stitch Tab

Begin at center back neck with provisional cast-on: Using crochet hook and waste yarn, chain 4. With shawl yarn and needles, knit up 2 sts in 2 back loops of chain.

Rows 1–6: knit.

Row 7: k2; rotate rectangle to pick up and knit 1 stitch in each of 3 garter stitch ridges on side edge of tab; remove waste yarn from 2 cast-on stitches, place stitches on needles, and k2. (7 sts) Start Budding Lace Beginning.

Ordinary Cast-on

Cast on 5 sts.

Rows 1 & 2: knit.

Row 3: k1, inc1 (knit into front and back of st), k1, inc1, k1. (7 sts)

Row 4: knit. Start Budding Lace Beginning.

Budding Lace Beginning (Chart 1)

Row 1 (RS): k2, *yo, k1, yo, place marker,* k1, repeat between *s, k2. (11 sts)

All Even Rows (WS): k2, purl to last 2 sts, k2.

Row 3: k2, *yo, k3, yo,* k1, repeat between *s, k2. (15 sts)

Row 5: k2, *yo, k5, yo,* k1, repeat between *s, k2. (19 sts)

Row 7: k2, *yo, k1, yo, ssk, k1, k2tog, yo, k1, yo,* k1, repeat between *s, k2. (23 sts)

Row 9: k2, *yo, k3, yo, sk2p, yo, k3, yo,* k1, repeat between *s, k2. (27 sts) Start Budding Lace Repeat

Budding Lace Repeat (Chart 2)

Work Rows 1–6 for pattern. Instructions inside brackets are worked one additional time with each repeat. Stitch count is for first repeat.

Row 1 (RS): k2, *yo, k3, [k2tog, yo, k1, yo, ssk, k1] 1 time, k2, yo,* k1, repeat between *s, k2. (31 sts)

All Even Rows (WS): k2, purl to last 2 sts, k2.

Row 3: k2, *yo, k1, yo, ssk, k1, [k2tog, yo, k1, yo, ssk, k1] 1 time, k2tog, yo, k1, yo,* k1, repeat between *s, k2. (35 sts)

Row 5: k2, *yo, k3, yo, sk2p, [yo, k3, yo, sk2p] 1 time, yo, k3, yo,* k1, repeat between *s, k2. (39 sts)

Work Rows 1–6 14 times total (195 sts). Start Lily of the Valley Border.

Lily of the Valley Border (Charts 3A, B, C & D)

At center stitch, lace reverses to form a mirror image. See Note 3 for nupp information. Be careful not to include yo's on either side of nupp when working p5tog.

Row 1 (RS): k2, *yo, knit to marker, yo,* k1, repeat between *s, k2. (199 sts)

All Even Rows (WS): k2, purl across to last 2 sts, working p5tog for nupps, k2.

Row 3: k2, yo, k2tog, k5, yo, nupp, yo, k1, [sk2p, k5, yo, nupp, yo, k1] to 8 sts before marker, ssk, k6, yo, k1, yo, k6, k2tog, k1, yo, nupp, yo, k5, [sk2p, k1, yo, nupp, yo, k5] to last 4 sts, ssk, yo, k2. (203 sts)

Row 5: k2, yo, k1, k2tog, [k4, yo, nupp, yo, k2, sk2p] to 6 sts before marker, k4, yo, nupp, k1, yo, k1, yo, k1, nupp, yo, k4, [sk2p, k2, yo, nupp, yo, k4] to last 5 sts, ssk, k1, yo, k2. (207 sts)

Instructions

Row 7: k2, yo, k2, k2tog, [k3, yo, nupp, yo, k3, sk2p] to 7 sts before marker, k3, yo, nupp, yo, k1, ssk, yo, k1, yo, k2tog, k1, yo, nupp, yo, k3, [sk2p, k3, yo, nupp, yo, k3] to last 6 sts, ssk, k2, yo, k2. (211 sts)

Row 9: k2, yo, k3, k2tog, [k2, yo, nupp, yo, k4, sk2p] to 8 sts before marker, k2, yo, nupp, yo, k3, ssk, yo, k1, yo, k2tog, k3, yo, nupp, yo, k2, [sk2p, k4, yo, nupp, yo, k2] to last 7 sts, ssk, k3, yo, k2. (215 sts)

Row 11: k2, yo, k4, k2tog, k1, yo, nupp, yo, k5, [sk2p, k1, yo, nupp, yo, k5] to 2 sts before marker, ssk, yo, k1, yo, k2tog, k5, yo, nupp, yo, k1, [sk2p, k5, yo, nupp, yo, k1] to last 8 sts, ssk, k4, yo, k2. (219 sts)

Row 13: k2, yo, k2tog, yo, nupp, yo, k1, [sk2p, k5, yo, nupp, yo, k1] to 3 sts before marker, ssk, k1, yo, k1, yo, k1, k2tog, [k1, yo, nupp, yo, k5, sk2p] to last 6 sts, k1, yo, nupp, yo, ssk, yo, k2. (223 sts)

Row 15: k2, yo, k2tog, yo, nupp, yo, k2, [sk2p, k4, yo, nupp, yo, k2] to 4 sts before marker, ssk, k2, yo, k1, yo, k2, k2tog, [k2, yo, nupp, yo, k4, sk2p] to last 7 sts, k2, yo, nupp, yo, ssk, yo, k2. (227 sts)

Row 17: k2, yo, k2tog, yo, nupp, yo, k3, [sk2p, k3, yo, nupp, yo, k3] to 5 sts before marker, ssk, k3, yo, k1, yo, k3, k2tog, [k3, yo, nupp, yo, k3, sk2p] to last 8 sts, k3, yo, nupp, yo, ssk, yo, k2. (231 sts)

Row 19: k2, yo, k2tog, yo, nupp, yo, k4, [sk2p, k2, yo, nupp, yo, k4] to 6 sts before marker, ssk, k4, yo, k1, yo, k4, k2tog, [k4, yo, nupp, yo, k2, sk2p] to last 9 sts, k4, yo, nupp, yo, ssk, yo, k2. (235 sts)

Row 21: k2, yo, k2tog, yo, nupp, yo, k5, [sk2p, k1, yo, nupp, yo, k5] to 7 sts before marker, ssk, k5, yo, k1, yo, k5, k2tog, [k5, yo, nupp, yo, k1, sk2p] to last 10 sts, k5, yo, nupp, yo, ssk, yo, k2. (239 sts) Start Lace Border.

Lace Border (Chart 4)

Row 1 (RS): k2, *yo, knit to marker, yo,* k1, repeat between *s, k2. (243 sts)

All Even Rows (WS): k2, purl to last 2 sts, k2.

Row 3: k2, *yo, k1, yo, ssk, k1, [k2tog, yo, k3, yo, ssk, k1] to 3 sts before marker, k2tog, yo, k1, yo,* k1, repeat between *s, k2. (247 sts)

Row 5: k2, *yo, k1, [yo, ssk, yo, sk2p, yo, k2tog, yo, k1] to marker, yo,* k1, repeat between *s, k2. (251 sts)

Row 7: k2, *yo, k3, [yo, ssk, k1, k2tog, yo, k3] to marker, yo,* k1, repeat between *s, k2. (255 sts)

Row 9: k2, *yo, k5, [yo, sk2p, yo, k5] to marker, yo,* k1, repeat between *s, k2. (259 sts) Start Scalloped Lace Edging.

Scalloped Lace Edging (Chart 5)

Stitch counts stays even until Row 7.

Rows 1, 3 & 5 (RS): k2, [yo, k2, sk2p, k2, yo, k1] to last st, k1.

Rows 2, 4 & 6 (WS): k2, purl to last 2 sts, k2.

Row 7: k2, [yo, k7, yo, k1] to last st, k1. (323 sts)

Row 8: knit.

Row 9 (RS): Elastic Cast-off: k1, *k1, transfer 2 sts back to holding needle, and k2tog through back loops* across.

Finishing

Weave in yarn ends, and trim after blocking.

Blocking

Soak shawl in water—adding soap appropriate for fiber if desired—for at least 20 minutes. Rinse, and wrap in towel to blot out water. Lay flat, and smooth into shape. If using blocking wires, run through eyelets along top edge, and pin. Pull out scallops along side edges at each “yo, k1, yo” and pin. Leave in place until thoroughly dry. Trim yarn ends.

Swallowtail Lace Shawl Charts

Notes

1. See written instructions for cast-on, last edging row, and cast-off information.
2. Since shawl is shaped as two triangles separated by the Center Stitch, for first half of row on Charts 1, 2 and 4, start with 2 Border Stitches and work across to Center Stitch; for second half of row, again read chart from right to left, ignoring 2 Border Stitches and working them at the end instead of Center Stitch. Charts 3A, B, C and D show both halves of row since patterning is mirror image. Chart 5 is worked to the last stitch instead of the Center Stitch.
3. Only odd numbered rows are charted. All even rows for Charts 1, 2 and 4: k2, purl to last 2 sts, k2. On even rows for Charts 3A, B, C and D, k2, purl across to last 2 sts, working p5tog for nupps, k2. See written instructions for Row 8 on Chart 5.
4. Read charts from bottom to top and from right to left.

Symbols Key



- | | |
|-------|--|
| k | knit |
| k2tog | knit 2 stitches together |
| nupp | work k1, yo, k1, yo, k1 |
| sk2p | slip 1 stitch knitwise, k2tog, and pass slipped stitch over k2tog |
| ssk | slip 1 stitch knitwise, slip next stitch knitwise, replace on holding needle, and k2tog through back loops |
| yo | yarn over |

Chart 1—Budding Lace Beginning

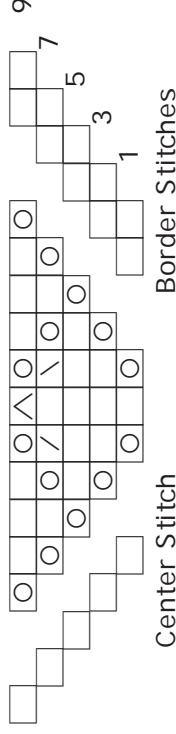
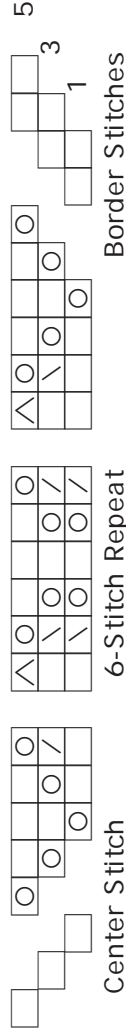


Chart 2—Budding Lace Repeat

Work Rows 1–6 14 times.



Swallowtail Lace Shawl Charts

Chart 3A—Lily of the Valley Border

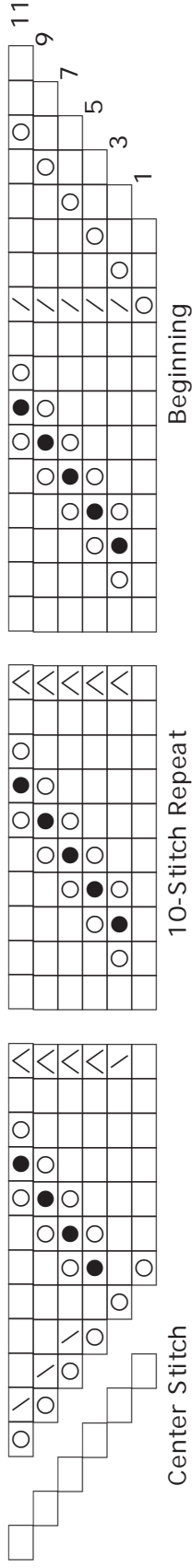


Chart 3B—Lily of the Valley Border

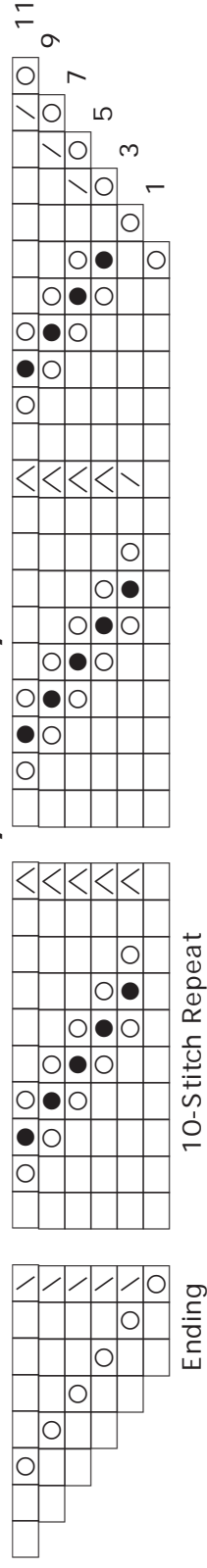


Chart 3C—Lily of the Valley Border

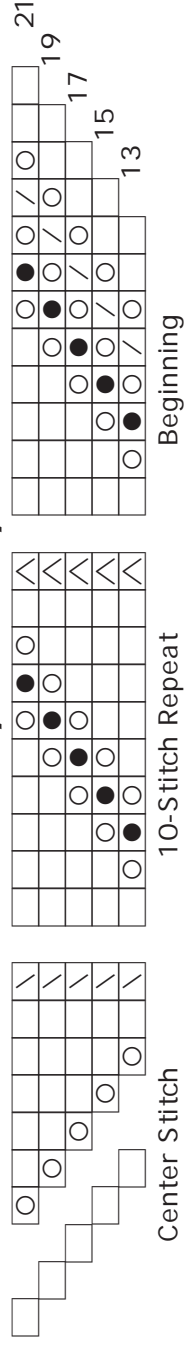
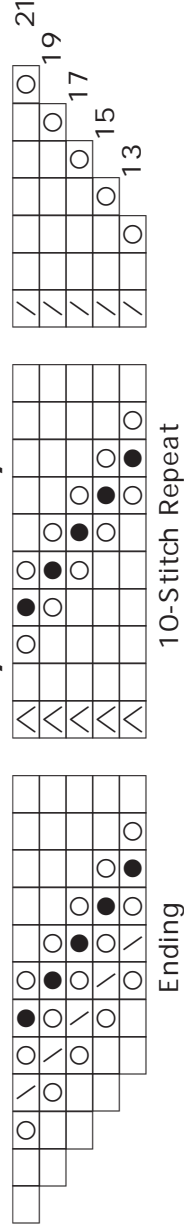


Chart 3D—Lily of the Valley Border



Swallowtail Lace Shawl Charts

Chart 4—Lace Border

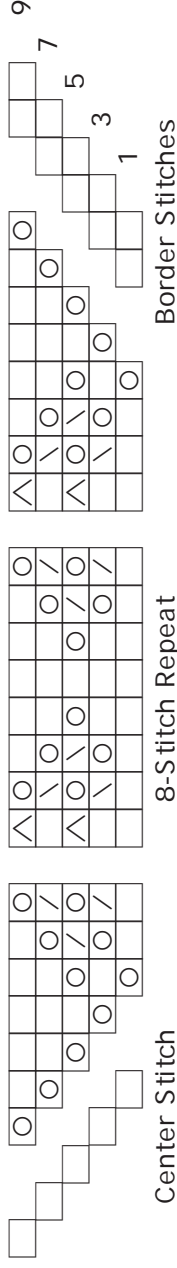


Chart 5—Scalloped Lace Edging

Work chart to last stitch instead of center stitch.
See written instructions for Row 18 and cast-off.

