

# Evelyn Clark Designs . . .

## Brimnes Lace Shawl

*The name for this small stockinette stitch lace shawl was inspired by Bill Holm's wonderful book, *The Windows of Brimnes*. In it, he explains that *brim* means surf and *nes* means peninsula or headlands in Icelandic. With its border of old shale lace, this shallow triangular shawl reminds me of land reaching out into the sea.*

*It starts at the top with lines of Icelandic spider lace and increases every row along the top edge to elongate the ends. The waves of old shale lace offer an opportunity to play with colors. Instructions are given for two sizes, and it can be customized.*

*Designed for Istex Einband lace weight yarn, it also can be knit in a variety of other lace and fingering weight yarns.*

### Skill Level

Intermediate

### Sizes

Smaller: 19" (48cm) deep and 60" (152.5cm) wide

Larger: 21" (53cm) deep and 64" (163cm) wide

### Abbreviations

k knit  
k2tog knit 2 stitches together  
RS right side of shawl  
sk2p slip 1 stitch knitwise, k2tog, and pass slipped stitch over k2tog  
ssk slip 1 stitch knitwise, slip next stitch knitwise, replace on holding needle, and k2tog through back loops  
st(s) stitch(es)  
WS wrong side of shawl  
yo yarn over  
\* repeat instructions between asterisks  
( ) repeat instructions inside parentheses as specified  
[ ] repeat instructions inside brackets specified number of times or to remaining number of stitches

### Yarn

Istex Einband, 100 percent lace weight wool (18 wpi)



Smaller Size Shawl: Total of 90g (445 yds/407m):  
Color A 40g (198yds/181m); Color B 14g (69 yds/63m); Color C 16g (79 yds/72m); Color D 20g (99 yds/90m)

Larger Size Shawl Shown Above: Total of 100g (494 yds/450m)—Color A Cream 0851 44g (217 yds/198m); Color B Pale Gray 1026 16g (79 yds/72m); Color C Medium Gray 1027 18g (89 yds/81m); Color D Natural Black 0151 22g (109yds/100m)

### Needles

US size 4 (3.5mm) needles, or size to obtain gauge.

### Gauge

22 sts = 4" (10cm) in stockinette stitch

# Instructions

---

## Supplies

2 stitch markers; 1 coilless safety pin; US C (2.75mm) crochet hook for cast-off; tapestry needle to weave in yarn ends; and 140 rustproof pins for blocking

## Optional Supplies

1 yd (1m) smooth waste yarn and crochet hook for provisional cast-on; and blocking wires

## Shawl Notes

1. Individual knitting style and yarn type affect the lace, so adjust needle size to get preferred results.
2. Shawl is a shallow triangle made up of 2 wide triangles separated by the center stitch. It is worked from the top down and increases 6 stitches every two rows.
3. It can be knit in one color or many, and directions include 4 color changes shown in sample shawl.
4. When changing colors, it is helpful to use a looped sewn splice to join the yarns. Knit to end of row. Then pierce the old yarn with a sharp-pointed needle threaded with the new yarn to mark row end. Cut old yarn 3" (7.5cm) from that mark. Carefully unknit the last 8 stitches. Leaving new yarn piercing the old yarn, remove needle to thread with tail of old yarn, and sew small running stitches into the unraveled yarn towards the knitting for about 2" (5cm). Leave a small open loop where the new yarn is. Pull out new yarn, thread it through loop of old yarn, and sew it towards the ball for about 2" (5cm). Pull on yarn ends to snug join, rub between palms to smooth, and trim any remaining tails. Knit to end of row, adjusting tension so row ends where yarns are joined.
5. Instructions are given for 2 sizes, and where numbers differ, larger size follows after slash. Size can be customized by working to any even multiple of 18 plus 7 stitches before starting Old Shale Lace Border.
6. It is helpful to place markers before the center stitch and the last 2 border stitches, as well as to hang a safety pin at the edge to mark beginning of odd numbered rows.
7. Lace can be worked from written instructions or charts.
8. Wraps-per-inch (wpi) is a way to measure yarn size. Without stretching, wrap yarn around a ruler for 1" (2.5cm), and count the strands.

## INSTRUCTIONS—Cast-on

Shawl can be started with either a provisional or ordinary cast-on for the Garter Stitch Tab.

### Provisional Cast-on Garter Stitch Tab

Begin at center back neck with provisional cast-on: Using crochet hook and waste yarn, chain 4. With Color A shawl yarn and needles, knit up 2 sts in 2 back loops of chain.

Rows 1–6: knit across.

Row 7: k2; rotate rectangle to pick up and knit 1 stitch in each of 3 garter stitch ridges on side edge of tab; remove waste yarn from 2 cast-on stitches, place stitches on needles, and k2. (7 sts)

Start Shawl Beginning.

### Ordinary Cast-on Garter Stitch Tab

Begin at center back neck with Color A shawl yarn, and cast on 2 sts.

Rows 1–6: knit across.

Row 7: k2, rotate tab to pick up and knit 1 stitch in each of 3 garter stitch ridges on side edge of tab; k1 in each of 2 cast-on stitches. (7 sts)

Start Shawl Beginning.

### Shawl Beginning (Chart 1)

Row 1 (RS): k2, \*yo, k1, yo, place marker,\* k1, repeat between \*s, k2. (11 sts)

Row 2 (WS): k2, yo, purl to last 2 sts, yo, k2. (13 sts)

Row 3: k2, \*yo, k4, yo,\* k1, repeat between \*s, k2. (17 sts)

Row 4: k2, yo, purl to last 2 sts, yo, k2. (19 sts)

Row 5: k2, \*yo, k7, yo,\* k1, repeat between \*s, k2. (23 sts)

Row 6: k2, yo, purl to last 2 sts, yo, k2. (25 sts)

Row 7: k2, \*yo, k10, yo,\* k1, repeat between \*s, k2. (29 sts)

Row 8: k2, yo, purl to last 2 sts, yo, k2. (31 sts)

Start Spider Lace Repeat.

### Spider Lace Repeat (Chart 2)

Pattern repeats over 16 rows and increases 6 stitches every 2 rows or 48 stitches over the Repeat. Stitch count only is shown for first 16 rows. Instructions inside brackets are worked 4 additional times with each Repeat.

Row 1 (RS): k2, yo, k1, [yo, ssk, k1, k2tog, yo, k1] 2 times, (yo, k1) 2 times, [yo, ssk, k1, k2tog, yo, k1] 2 times, yo, k2. (35 sts)

# Instructions

---

Row 2 (WS): k2, yo, purl to last 2 sts, yo, k2. (37 sts)

Row 3: k2, yo, k3, [k1, yo, sk2p, yo, k2] 2 times, (k1, yo) 2 times, k2, [k1, yo, sk2p, yo, k2] 2 times, k2, yo, k2. (41 sts)

Row 4: k2, yo, purl to last 2 sts, yo, k2. (43 sts)

Row 5: k2, yo, k2, yo, ssk, k1, [k2tog, yo, k1, yo, ssk, k1] 2 times, k2, yo, k1, yo, k3, [k2tog, yo, k1, yo, ssk, k1] 2 times, k2tog, (yo, k2) 2 times. (47 sts)

Row 6: k2, yo, purl to last 2 sts, yo, k2. (49 sts)

Row 7: k2, yo, k2tog, [yo, k3, yo, sk2p] 3 times, yo, k2, yo, k1, yo, k2, yo, sk2p, [yo, k3, yo, sk2p] 2 times, yo, k3, yo, ssk, yo, k2. (53 sts)

Row 8: k2, yo, purl to last 2 sts, yo, k2. (55 sts)

Rows 9, 11, 13 & 15: k2, yo, knit to marker, yo, k1, yo, knit to last 2 sts, yo, k2. (59, 65, 71, 77 sts)

Rows 10, 12, 14 & 16: k2, yo, purl to last 2 sts, yo, k2. (61, 67, 73, 79 sts)

Work Rows 1–16 4 times (223 sts). For Larger size, then work Rows 1–12 (259 sts). To customize size, work to any stitch count that is an even multiple of 18 plus 7 sts.

Start Old Shale Lace Border Beginning.

## Old Shale Lace Border Beginning (Charts 3A & 3B)

Row 1 (RS): k2, yo, [(k1, yo) 3 times, k2tog 3 times, k1, ssk 3 times, (yo, k1) 2 times, yo] 6/7 times, (k1, yo) 2 times, k1 [(yo, k1) 2 times, yo, k2tog 3 times, k1, ssk 3 times, (yo, k1) 3 times] 6/7 times, yo, k2. (227/263 sts)

Rows 2 & 4 (WS): k2, yo, purl to last 2 sts, yo, k2. (229/265 sts, 235/271 sts)

Row 3: Change to Color B (see Note 4 on Page 2 about splicing color changes), k2, yo, knit to marker, yo, k1, yo, knit to last 2 sts, yo, k2. (233/269 sts)

Row 5: k2, yo, ssk, k2, yo, [(k1, yo) 3 times, k2tog 3 times, k1, ssk 3 times, (yo, k1) 2 times, yo] 6/7 times, k1, yo, k2tog, yo, k1, yo, ssk, yo, k1, [(yo, k1) 2 times, yo, k2tog 3 times, k1, ssk 3 times, (yo, k1) 3 times] 6/7 times, yo, k2, k2tog, yo, k2. (239/275 sts)

Rows 6 & 8: k2, yo, purl to last 2 sts, yo, k2. (241/277 sts, 247/283 sts)

Row 7: k2, yo, knit to marker, yo, k1, yo, knit to last 2 sts, yo, k2. (245/281 sts)

Row 9: k2, yo, ssk 3 times, (yo, k1) 2 times, yo, [(k1, yo) 3 times, k2tog 3 times, k1, ssk 3 times, (yo, k1) 2 times, yo] 6/7 times, k1, yo, k2, k2tog, yo, k1, yo, ssk, k2, yo, k1, [(yo, k1) 2 times, yo, k2tog 3 times, k1, ssk 3 times, (yo, k1) 3 times] 6/7 times, (yo, k1) 2 times, yo, k2tog 3 times, yo, k2. (251/287 sts)

Rows 10 & 12: k2, yo, purl to last 2 sts, yo, k2. (253/289 sts, 259/295 sts)

Row 11: k2, yo, knit to marker, yo, k1, yo, knit to last 2 sts, yo, k2. (257/293 sts)

Row 13: k2, yo, k4, ssk 3 times, (yo, k1) 2 times, yo, [(k1, yo) 3 times, k2tog 3 times, k1, ssk 3 times, (yo, k1) 2 times, yo] 6/7 times, (k1, yo) 2 times, k1, k2tog 2 times, yo, k1, yo, ssk 2 times, (k1, yo) 2 times, k1, [(yo, k1) 2 times, yo, k2tog 3 times, k1, ssk 3 times, (yo, k1) 3 times] 6/7 times, (yo, k1) 2 times, yo, k2tog 3 times, k4, yo, k2. (263/299 sts)

Rows 14 & 16: k2, yo, purl to last 2 sts, yo, k2. (265/301 sts, 271/307 sts)

Row 15: Change to Color C, k2, yo, knit to marker, yo, k1, yo, knit to last 2 sts, yo, k2. (269/305 sts)

Row 17: k2, (yo, k1) 3 times, k2tog 2 times, k1, ssk 3 times, (yo, k1) 2 times, yo, [(k1, yo) 3 times, k2tog 3 times, k1, ssk 3 times, (yo, k1) 2 times, yo] 6/7 times, (k1, yo) 3 times, k2tog 3 times, yo, k1, yo, ssk 3 times (yo, k1) 3 times, [(yo, k1) 2 times, yo, k2tog 3 times, k1, ssk 3 times, (yo, k1) 3 times] 6/7 times, (yo, k1) 2 times, yo, k2tog 3 times, k1, ssk 2 times, (k1, yo) 3 times, k2. (275/311 sts)

Rows 18 & 20: k2, yo, purl to last 2 sts, yo, k2. (277/313 sts, 283/319 sts)

Row 19: k2, yo, knit to marker, yo, k1, yo, knit to last 2 sts, yo, k2. (277/ sts)

Row 21: k2, yo, ssk, yo, [(k1, yo) 3 times, k2tog 3 times, k1, ssk 3 times, (yo, k1) 2 times, yo] 7/8 times, (k1, yo) 3 times, k2tog 3 times, k2, yo, k1, yo, k2, ssk 3 times, (yo, k1) 3 times, [(yo, k1) 2 times, yo, k2tog 3 times, k1, ssk 3 times, (yo, k1) 3 times] 7/8 times, yo, k2tog, yo, k2. (283 sts)

Row 22: k2, yo, purl to last 2 sts, yo, k2. (289/325 sts)

Row 23: k2, yo, knit to marker, yo, k1, yo, knit to last 2 sts, yo, k2. (293/329 sts)

Row 24: k2, yo, purl to last 2 sts, yo, k2. (295/331 sts)

# Instructions

---

## Old Shale Lace Border Ending (Charts 4A & 4B)

Row 25: k2, yo, ssk 2 times, (k1, yo) 2 times, [k1, yo] 3 times, k2tog 3 times, k1, ssk 3 times, (yo, k1) 2 times, yo] 7/8 times, (k1, yo) 3 times, k2tog 3 times, k4, yo, k1, yo, k4, ssk 3 times, (yo, k1) 2 times, yo, [(k1, yo) 3 times, k2tog 3 times, k1, ssk 3 times, (yo, k1) 2 times, yo] 7/8 times, (k1, yo) 2 times, k1, k2tog 2 times, yo, k2. (299/335 sts)

Rows 26 & 28: k2, yo, purl to last 2 sts, yo, k2. (301/337 sts, 307/343 sts)

Row 27: Change to Color D, k2, yo, knit to marker, yo, k1, yo, knit to last 2 sts, yo, k2. (305/341 sts)

Row 29: k2, yo, k2, ssk 3 times, (yo, k1) 2 times, yo, [(k1, yo) 3 times, k2tog 3 times, k1, ssk 3 times, (yo, k1) 2 times, yo] 7/8 times, (k1, yo) 3 times, k2tog 3 times, k1, ssk, k2, (yo, k1) 3 times, yo, k2, k2tog, k1, ssk 3 times, (yo, k1) 2 times, yo, [(k1, yo) 3 times, k2tog 3 times, k1, ssk 3 times, (yo, k1) 2 times, yo] 7/8 times, (k1, yo) 3 times, k2tog 3 times, k2, yo, k2. (311/347 sts)

Rows 30 & 32: k2, yo, purl to last 2 sts, yo, k2. (313/349 sts, 319/355 sts)

Row 31: k2, yo, knit to marker, yo, k1, yo, knit to last 2 sts, yo, k2. (317/353 sts)

Row 33: k2, yo, k1, yo, k2, k2tog, k1, ssk 3 times, (yo, k1) 2 times, yo, [(k1, yo) 3 times, k2tog 3 times, k1, ssk 3 times, (yo, k1) 2 times, yo] 7/8 times, (k1, yo) 3 times, k2tog 3 times, k1, ssk 2 times, (k1, yo) 6 times, k1, k2tog 2 times, k1, ssk 3 times (yo, k1) 2 times, yo, [(k1, yo) 3 times, k2tog 3 times, k1, ssk 3 times, (yo, k1) 2 times, yo] 7/8 times, (k1, yo) 3 times, k2tog 3 times, k1, ssk, k2, yo, k1, yo, k2. (323/359 sts)

Rows 34 & 36: k2, yo, purl to last 2 sts, yo, k2. (325/361 sts, 331/367 sts)

Row 35: k2, yo, knit to marker, yo, k1, yo, knit to last 2 sts, yo, k2. (329/365 sts)

Row 37: k2, yo, [(k1, yo) 3 times, k2tog 3 times, k1, ssk 3 times, (yo, k1) 2 times, yo] 9/10 times, (k1, yo) 2 times, [(k1, yo) 3 times, k2tog 3 times, k1, ssk 3 times, (yo, k1) 2 times, yo] 9/10 times, k1, yo, k2. (335/371 sts)

Row 38: k2, purl to last 2 sts, k2.

Work Crocheted Chain Cast-off

## Crocheted Chain Cast-off

For longer loops, chain more than 5 between slipped stitches.

Cast-off: Using crochet hook, slip stitch 2 together (insert hook through loops of 2 stitches as if to knit them together through the back loops, yarn over hook and pull through all stitches), [chain 5, slip stitch 3 together] to 3 sts before center marker, chain 5, slip stitch 2 together, chain 5, slip stitch 3 together, chain 5 slip stitch 2 together, [chain 5, slip stitch 3 together] to last 2 sts, chain 5, slip stitch 2 together.

## Finishing

Weave in yarn ends, and trim after blocking.

## Blocking

Soak shawl in water—adding soap appropriate for fiber if desired—for at least 20 minutes. Rinse, and wrap in towel to blot out water. Lay flat, and smooth into shape. If using blocking wires, run through eyelets along top and pin. Along side edges, pull out Old Shale scallops, and pin chain loops. Leave in place until thoroughly dry. Trim yarn ends.

# Brimnes Lace Shawl Charts

## Notes

- See written instructions for cast-on, stitch count, suggested number of repeats, and cast-off information.
- Read charts from bottom to top and from right to left.
- Shawl is shaped as two wide triangles separated by the Center Stitch, and each half of the shawl is charted since patterning is mirror imaged. Because of their size, the charts for each half of the Old Shale Edging are in two parts. Chart 3B is a continuation of Chart 3A, and Chart 4B is a continuation of Chart 4A.
- All rows are charted. Even numbered rows are: k2, yo, purl to last 2 stitches, yo, k2.
- Charts may be copied to enlarge.

## Symbols Key



- k knit on right side; purl on wrong side
- k2tog knit 2 stitches together
- p purl on right side; knit on wrong side
- k knit on right side; purl on wrong side
- sk2p slip 1 stitch knitwise, knit next 2 stitches together, and pass slipped stitch over k2tog
- ssk slip 1 stitch knitwise, slip next stitch knitwise, replace on holding needle, and k2tog through back loops.
- yo yarn over

Chart 1—Beginning

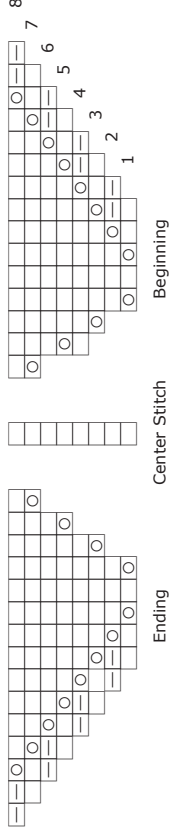
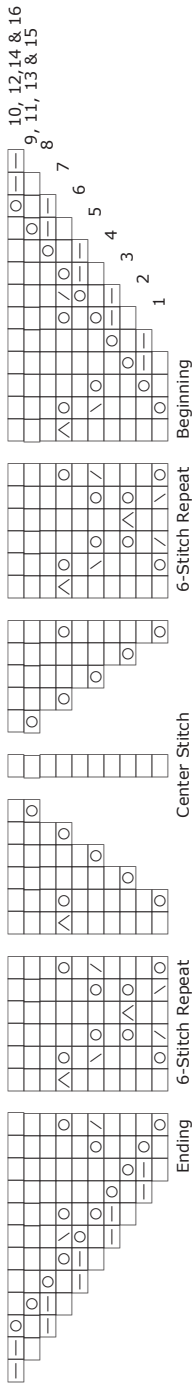


Chart 2—Spider Lace Repeat

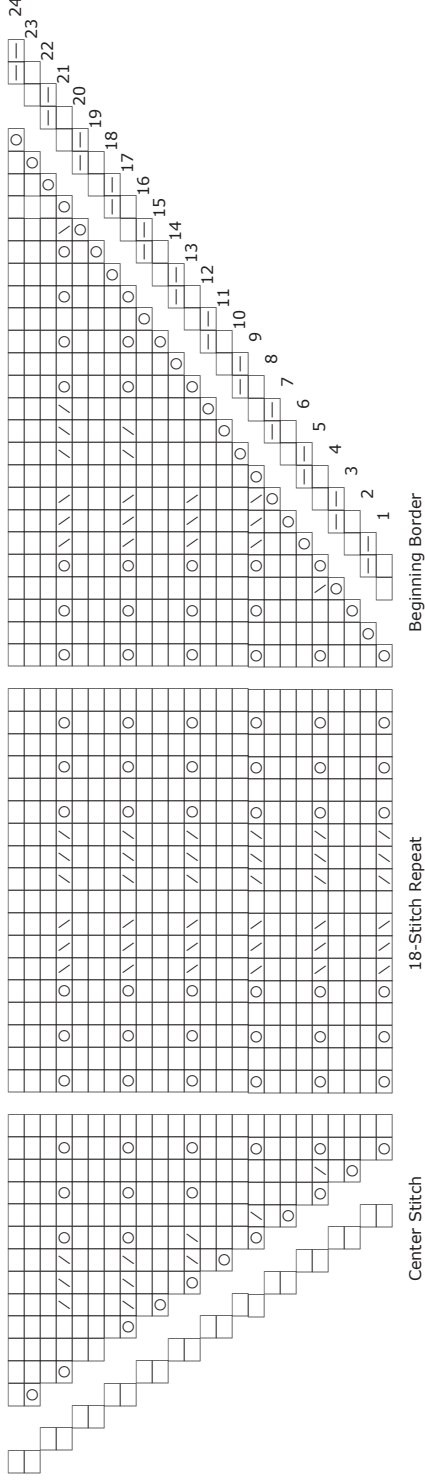
Work 16-Row Repeat for Pattern



# Brimnes Lace Shawl Charts

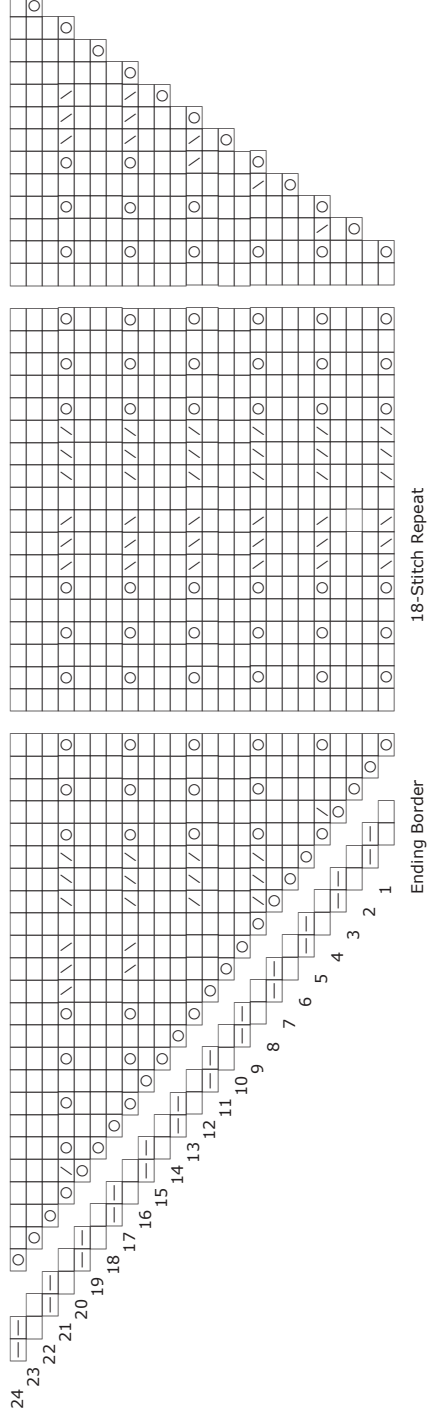
**Chart 3A—Old Shale Lace Border: Beginning**

Chart shows first half of each row; second half of each row is on Chart 3B.



**Chart 3B—Old Shale Lace Border: Beginning**

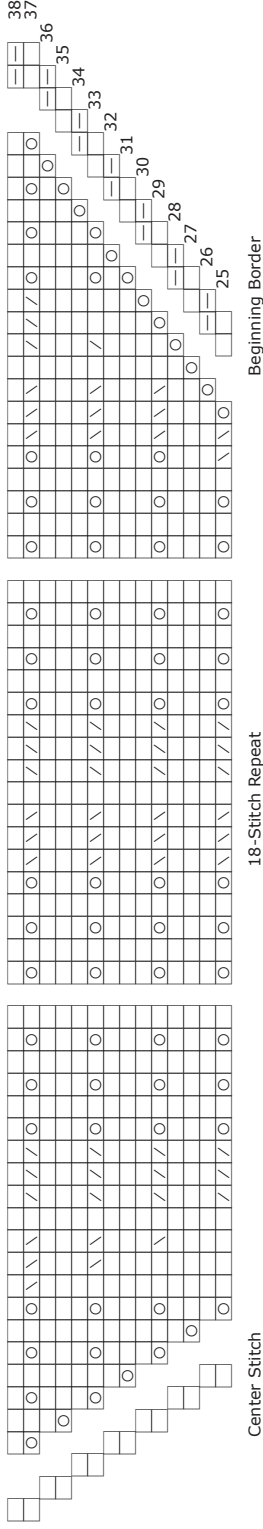
Chart shows second half of each row; first half of each row is on Chart 3A.



# Brimnes Lace Shawl Charts

**Chart 4A—Old Shale Lace Border Ending**

Chart shows first half of each row; second half of each row is on Chart 4B.



**Chart 4B—Old Shale Lace Border Ending**

Chart shows second half of each row; first half of each row is on Chart 4A.

